



Field Feature Bill of Material (FFBM)

INSTALLATION of MICROCODE Level F12380

On 3746-9x0 attached to 3745-XXA
or
on 3746-950 alone.

Written by: J. Michaut
Illustration by: S. Vaccaro
Checked by: C. Franoux
Approved by: A. Badino
Reviewed by: A. Bowen

3745 FFBM	PN 02L1257 1 of 30	EC F12391 05 DEC 97	EC F12391A 28 JAN 98			
--------------	-----------------------	------------------------	-------------------------	--	--	--



PN 02L1257 2 of 30	EC F12391 05 DEC 97	EC F12391A 28 JAN 98			
-----------------------	------------------------	-------------------------	--	--	--

Before Installation (Steps 1-8)

WARNING to CE:

- Customer Console(s): DCAF level should be 1.3 + CSD UB20924.

Very Important

The **Manage ESCON Processors** function is now only used to:

1. Display the **ESCON lines** status.
2. Display the **ESCON stations** status.
3. Manage the **ESCON couplers** status.

If you need to modify your **ESCON processor configuration**, use the new function **Configure ESCON Processors**, see details in 16.0, "Appendix A. ESCON Configuration." on page 28.

1.0 Machines Affected

3745 Models XXA or 3746 Models 9X0

- With Service Processor Type 9585 (FC 5021), 3172 (FC 5021) or 7585-P02 (FC 5052).
- Without Microcode Level F12380.

Checkpoint: Check that the CSS 1 EC level is F12383.000.

If level is not present you must upgrade the Service Processor and the 3746-9x0 according to this instruction.

Note: Refer to **Chapter 3, Displaying the EC Level of Code** in the *Service Processor Installation and Maintenance (Based on 7585, 3172, and 9585)*, SY33-2120

2.0 Related BMs and ECs

2.1 Prerequisites

(Must be installed prior to this installation)

SP Type	Feature/BM
3172	64MB Memory Expansion (FC 5028) BM 08J5223.
7585-P02	None.
9585	2GB Hard Disk Drive (FC 5026) BM 29H4179, and 64MB Memory Expansion (FC 5028) BM 08J5340.

3745 FFBM	PN 02L1257 3 of 30	EC F12391 05 DEC 97	EC F12391A 28 JAN 98			
--------------	-----------------------	------------------------	-------------------------	--	--	--

2.2 Co-requisite

(Must be installed together)

SP Type	Feature/BM
3172	Service Processor Upgrade Drive (FC 5051) BM 08J5516.
7585-P02	None.
9585	Service Processor Upgrade Drive (FC 5051) BM 08J5516.

2.3 Companion

(May be installed together)

None.

3.0 BMs to be Installed

FFBM	Title
02L1257	Installation of Microcode level F12380 on 3746-9x0 attached to 3745-XXA, and/or an 3746-950 stand-alone.

4.0 Preparation

- Familiarize yourself with the purpose and details of the installation instruction before negotiating machine time with the customer.
- Check all items listed on the BM(s) to determine that all parts have been received.
- Call your Support Center to obtain the Microcode Fixe(s) (MCF) to be installed with the new LIC.
- Obtain the maintenance password from the Customer.
- Ensure that both the 3745 and 3746-9x0, types and models, are registered in RETAIN (CCPF).

For U.S.A machines, please call the Raleigh Multiplexor Support Center and verify your machine's registration in CCPF for:

- The seven digit serial number of the 3745 and 3746-9x0 are correct.
- The three digit model designation for the 3745 and 3746-9x0 are correct.

5.0 Programming

None.

6.0 Purpose and Description

Install the new level microcode level F12380.

- On the Service Processor, and
- Install on the 3746-9x0(s).

7.0 Installation Time

The installation time depends on the number of 3746-9x0 connected to the same Service Processor (Maximum 2). In the case of multiple 3746-9x0 connected to a Service Processor, global maintenance window must be requested to the customer. This will allow the customer to upgrade the 3746-900, and/or the 3746-950.

This global maintenance will be divided in up to 3 sub windows, one corresponding to each phase of the upgrade:

- Phase 1 is not disruptive to network traffic, and is used to upgrade the Service Processor and the NNP (if any).
- Phases 2 and 3, are used to update each 3746-9x0 machine attached to the Service Processor.

These phases are disruptive, but may be performed serially to avoid disrupting all machines at the same time.

- Nondisruptive operation estimated time: 3746-9x0/MOSS-E Code level upgrade on the Service Processor: 35 up-to 60 minutes for LIC install + 35 to 45 minutes per NNP + 18 minutes to apply the latest MCFs.
- Disruptive operation estimated times per 3746-9x0:
 - 3746-9x0 General IML: 6 minutes.
 - 3746-9x0 EEPROM Upgrade: 6 minutes.

To be reported as MES installation.

FFB/M Installed	Machine Hrs	System Hrs	CE Hour	Nbr of CE
02L1257	1 to 2	0.0	3	1

8.0 Tools/Materials Required

None.

Installation (Steps 9-12)

9.0 Safety

Not applicable.

10.0 Details of Installation

The largest configuration will be upgraded in 3 phases:

Phase 1: 3746-9x0/MOSS-E code level upgrade on the Service Processor as described in 10.1, "Procedure 1 - 3746-9x0/MOSS-E Code Level Upgrade.."

Phase 2: Code level upgrade on the first 3746-9x0, as described in 10.3, "Procedure 2 - 3746-9x0 Code Level Upgrade.."

Phase 3: Code level upgrade on the second 3746-9x0 (if any), as described in 10.3, "Procedure 2 - 3746-9x0 Code Level Upgrade.."

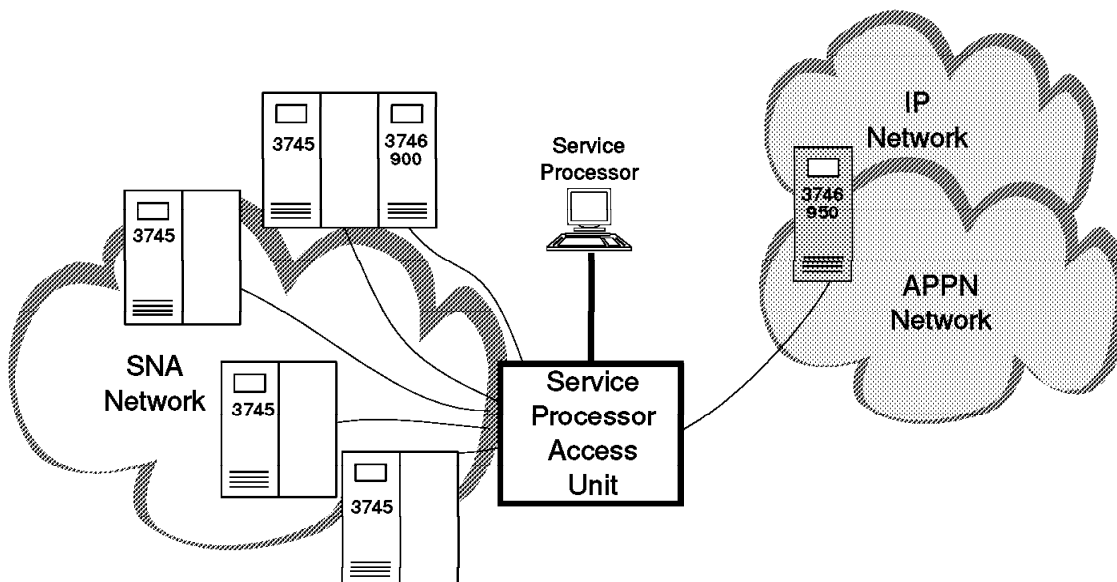


Figure 1. Service Processor Maximum Configuration.

10.1 Procedure 1 - 3746-9x0/MOSS-E Code Level Upgrade.

10.1.1 Saving the Service Processor Hard Disk on the Optical Disk.

Shut-down and Power OFF the Service Processor:

- ___ 1. If the Service Processor is **operational**, use the following procedure:
 - ___ a. On the MOSS-E view window click on **Program**
 - ___ b. Click on **Shut down**, then enter the Service Processor maintenance password (default is IBM3745) and click on **OK**.
You are now able to power OFF the Service Processor.
- ___ 2. Power **OFF** the Service Processor.
- ___ 3. Install the **Service Processor installation diskette 1 of the installed LIC** in the diskette drive.
- ___ 4. Power **ON** the Service Processor.

Backup the HDD on the Optical Disk:

- ___ 5. Install the **backup** optical disk in the optical drive.
- ___ 6. On the first screen displayed, press **Enter**
- ___ 7. From the primary window select option **Save hard disk** and follow the prompts.
Note: Wait for the message: 'Operation successfully completed'.
- ___ 8. At the end, select **Exit** from the primary window and follow the prompts:
 - On prompt, remove the diskette from the drive,
 - Remove the **backup** optical disk from the optical drive.
 - Secure them for further use.

10.1.2 Installing MES Data Save Function.

- ___ 1. Insert the **Customer Data Migration diskette** (PN 02L3850) in the Service Processor diskette drive.
- ___ 2. Enter the Service Processor maintenance password (default is IBM3745).
- ___ 3. Double click on the "**Service Processor object icon**".
- ___ 4. Click on "**Change Management**".
- ___ 5. Double click on "**Manage Microcode Fixes**"
- ___ 6. On **Manage Microcode Fixes** window, click on "**View**" (On function bar). Then, click on "**Change directory path**" (On pull down menu)
- ___ 7. On **Change Directory Path** window, enter **A:*.***. Then, click on "**OK**".
- ___ 8. On **Manage Microcode Fixes** window, click on the **fixes** to be applied.



- ___ 9. Click on **"File"** (On the function bar). Then, click on **"Move"** (On pull down menu).
- ___ 10. On the list displayed, according to the following table, click on the **MCF** to be applied:

LIC Level	Apply MCF
D2251X	MD22426.418
D2256X	MD22726.418
D4612X	MD22526.418
D4613X	MD22326.418

- ___ 11. On the **Move Microcode Fix files** window, enter **J:MCF**. Then, click on **"OK"**.

Enter the new path specification following the format {drive:\directory}:

J:\MCF\

OK

Cancel

Help

- ___ 12. On the **Change Directory Path** window, enter **J:MCFALL**. Then, click on **"OK"**.

Enter the full path of path or directory to be displayed following the format {drive:\directory\filename.extension or *}, or click on the OK push button for default directory:

J:\MCF\ALL

OK

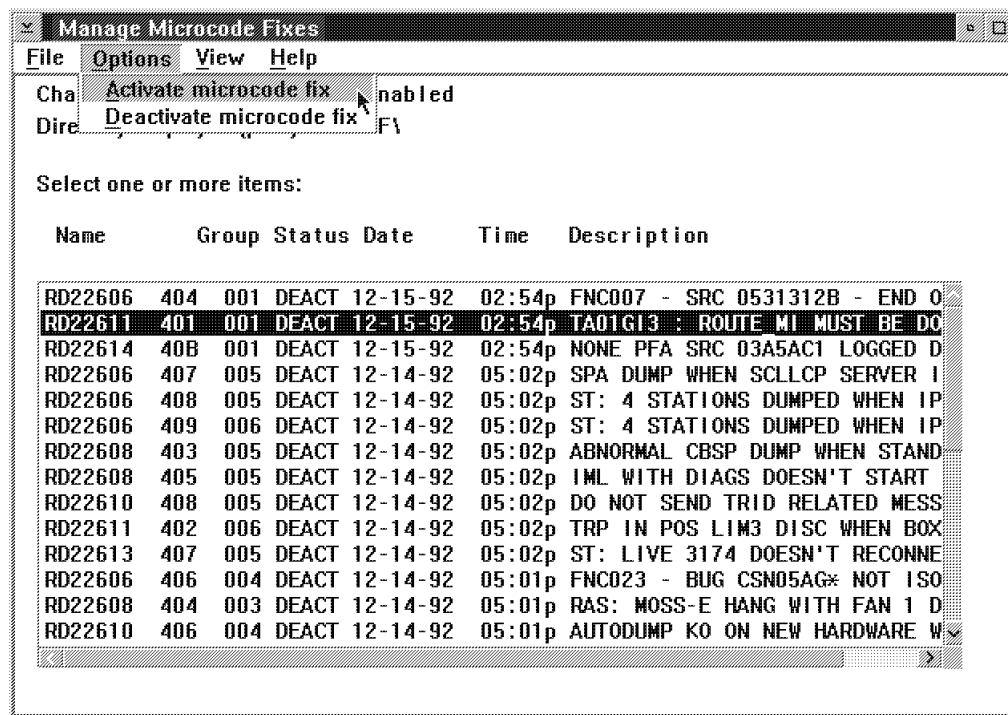
Cancel

Help

- ___ 13. Remove the diskette disk from the drive.



- ___ 14. On the **Manage Microcode Fixes** window, Click on the lines of the MCFs to be applied "**MES-Data Migration**", click on "**Options**" (On function bar). Then, click on **Activate microcode fix** (On pull down menu).



10.1.3 Verifying the MCF status.

- ___ 1. Enter the Service Processor maintenance password
- ___ 2. Double click on the "**Service Processor object icon**".
- ___ 3. Click on "**Change Management**".
- ___ 4. Double click on "**Manage Microcode Fixes**"
- ___ 5. Click on "**View**", click on "**Change directory path**"
- ___ 6. Enter the "**directory path**": **J:MC FALL**. Then, click on **OK**.
- ___ 7. The status of the MCF just applied should be "**ACT**".

MCF Status ACT?

NO, Call Support..

YES, continue with next step.

- ___ 8. Exit the **Change Management** functions,



10.1.4 Saving Customer Data on Diskette.

- ___ 1. On the **MOSS-E View** window, click on **Program**.
- ___ 2. Double click on **Log OFF MOSS-E**, then double click on **Log ON MOSS-E**.
- ___ 3. Insert the **backup** optical disk on the ODD.
- ___ 4. Double click on the "**Service Processor object icon**".
- ___ 5. Click on "**Functions to Use Under PE Guidance Only**".
- ___ 6. Double click on "**Save Customized data on diskette**".
- ___ 7. When prompted, insert the **Configuration Parameters diskette** (PN 02L3427) on the diskette drive.
- ___ 8. Click on "**OK**" follow the prompts and wait for completion..

10.1.5 Power OFF the Service Processor

- ___ 1. On the **MOSS-E View** window, click on **Program**.
- ___ 2. Double click on **shut-down**, then enter the maintenance password, and click on **OK**.
- ___ 3. When the pop-up appears saying shut down has completed, power OFF the Service Processor.

Service Processor type?

3172	Install Service Processor Upgrade MES (FC 5051) FFBM 08J5516; then, go to 10.1.7, "LIC Installation" on page 11
7585-P02	Go to 10.1.6, "Removing the Optical Disk Drive (ODD)."
9585	Install Service Processor Upgrade MES (FC 5051) FFBM 02L3496; then, go to 10.1.7, "LIC Installation" on page 11

10.1.6 Removing the Optical Disk Drive (ODD)

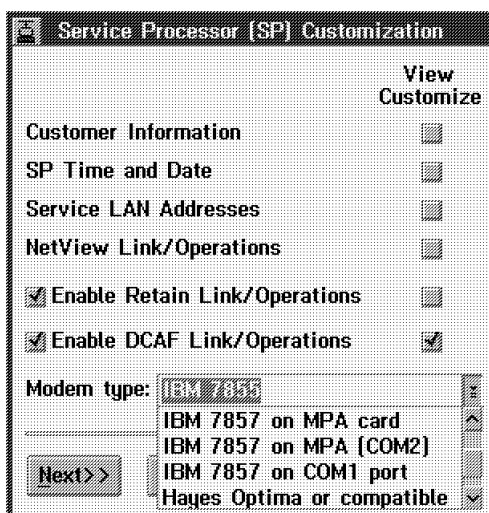
- ___ 1. **On the rear side of the ODD**, turn OFF the power switch (0).
- ___ 2. Disconnect the ODD Power cord from the ac Outlet Distribution Box or from the wall ac outlet, and the other end from the rear side of the ODD.
- ___ 3. **On the rear side of the Service Processor**, disconnect the signal cable from SCSI adapter (Position 3).
- ___ 4. Remove the ODD. Then, pack it into the return box (PN 32H0346) provided with this FFBM

10.1.7 LIC Installation

- ___ 1. Insert the **Service Processor installation diskette 1 (PN 02L3536)** in the diskette drive, then
- ___ 2. Insert the **Licensed Internal Code CD ROM (PN 02L2730)** in the CD ROM drive.
- ___ 3. Power **ON** the Service Processor.
- ___ 4. Wait for a while ... several messages will appear: Build hardisk, reboot, format ...
- ___ 5. When prompted, Insert the **Configuration Parameters diskette (PN 02L3427)** in the diskette drive.
- ___ 6. Wait for a while, when prompted insert the **Service Processor installation diskette 1 (PN 02L3536)** in the diskette drive.
- ___ 7. Wait until message Update Licensed Internal Code, Operation Successfully Completed; then, press the **Enter** key..
- ___ 8. When prompted remove the diskette from the diskette drive. Then, press **Enter** key.
- ___ 9. The system re-boot, wait for a while ...
Click on **OK** button when the message '**Do you want to customize your SP**' is displayed.

On the **Service Processor (SP) Customization** screen:

- ___ 10. Click on every **View Customize** check boxes.
- ___ 11. Click on **Modem type** drop down list, then select (click on) the modem and connection type of the modem used. Then, click on **Next>>** button.





On the **Customer Information Customization** screen:

- ___ 12. Verify the information recorded and make the necessary changes.
Then, click on **Next>>** button.

The screenshot shows the 'Customer Information Customization' window. It contains several text input fields for the following labels: 'Company name:', 'Address:', 'System location:', 'Contact:', 'Company telephone number by voice communication:', and 'Company service telephone number by modem communication:'. At the bottom of the window are three buttons: '<<Previous', 'Next>>', and 'Help'.

On the **SP Time and Date Customization** screen:

- ___ 13. Verify the information recorded and make the necessary changes.
Then, click on **Next>>** button.

The screenshot shows the 'SP Time and Date Customization' window. It has two main sections. The first section, 'Battery-Operated Clock', includes fields for 'Time' (9 [HH] 6 [MM]) and 'Date' (3 [MM] 28 [DD] 1997 [YYYY]), with 'Day' set to 'Friday'. The second section, 'Time-Zone Offset from GMT', includes 'Hours' (0 [0 to 13]), 'Minutes' (0 [0 to 30]), and a 'Direction' section with radio buttons for 'East' and 'West' (where 'West' is selected). Below these sections are 'Apply' and 'Refresh' buttons. At the bottom of the window are three buttons: '<<Previous', 'Next>>', and 'Help'.



On the **Service LAN Addresses** screen:

- ___ 14. Verify the information recorded and make the necessary changes.
Then, click on **Next>>** button.

The 'Service LAN Addresses' screen displays a table with columns: IP address, Subnet mask, Hostname, and UAA/LAA. It includes fields for Service Processor, NNP-A, NNP-B, TIC3 2080, SP default router, and MAE. A section for LAN Manager asks 'Do you have a LAN manager?' with radio buttons for Yes and No (selected), and a C&SM LAN ID field with the value 'MOSSE'. Navigation buttons at the bottom are '<<Previous', 'Next>>' (highlighted with a mouse cursor), and 'Help'.

	IP address	Subnet mask	Hostname	UAA/LAA
Service Processor:	9.100.77.61	255.255.255.0	SP11111	400000781111
NNP-A:	9.100.77.62	255.255.255.0	CA134567	
NNP-B:	9.100.77.64	255.255.255.0	CB134567	
TIC3 2080:	9.100.77.63	255.255.255.0		

SP default router:
MAE:

LAN Manager
Do you have a LAN manager? ☐ Yes ☒ No C&SM LAN ID:

<<Previous Next>> Help

On the **Netview Link(s)/Reporting Customization** screen:

- ___ 15. Verify the information recorded and make the necessary changes.
Then, click on **Next>>** button.

The 'NetView Link(s)/Reporting Customization' screen contains several sections: 'Generate alerts' (checked), 'NetView Link(s)' (Link(s) through? SNA, APPN; How many? 1, 2; Link type? LAN, SDLC), 'Machine Identification' (Machine type: 3745, Model: 17A, Serial number: XX-XXXX), 'Local Node Characteristics' (Network ID: SYSTSTAP, Local node name: MOSSNMVT), 'LAN Link' (TIC2 or TIC3 LAA: 400000502080 hex; TIC3 RSAP: 08 hexadecimal [04-9C]; Customize 3270 sessions? Yes, No), and 'Switched SDLC Link Telephone Number' (0143457280). Navigation buttons at the bottom are '<<Previous', 'Next>>' (highlighted with a mouse cursor), and 'Help'.

Generate alerts ☒

NetView Link(s)
Link(s) through? ☐ SNA ☒ APPN
How many? ☐ 1 ☒ 2
Link type? ☒ LAN ☐ SDLC

Machine Identification
Machine type Model Serial number
3745 17A XX - XXXXX

Local Node Characteristics
Network ID Local node name
SYSTSTAP MOSSNMVT

LAN Link
TIC2 or TIC3 LAA: 400000502080 hex
TIC3 RSAP: 08 hexadecimal [04-9C]
Customize 3270 sessions? ☒ Yes ☐ No

Switched SDLC Link Telephone Number
0143457280

<<Previous Next>> Help

On the **Token-Ring 3270 Session Customization** screen:



- ___ 16. Verify the information recorded and make the necessary changes.
Then, click on **Next>>** button.

The dialog box is titled "Token-Ring 3270 Session Customization". It contains the following fields and controls:

- Host code page: 297 France (dropdown menu)
- LU local/NAU address: 3 (spin box) numerical [1-255]
- Long session/LU name: B (text box)
- Number of sessions: 1 (spin box) numerical [1-4]
- Buttons at the bottom: <<Previous, Next>>, and Help.

On the **Retain Customization** screen:

- ___ 17. Verify the information recorded and make the necessary changes.
Then, click on **Next>>** button.

The dialog box is titled "Retain Customization". It contains the following fields and controls:

- ☒ Enable Remote Support Facility (RSF)
- ☒ Enable weekly automatic microcode download
- IBM RETAIN (DL2) telephone numbers
- Mandatory first number: (text box)
- Optional second number: (text box)
- Optional third number: (text box)
- Optional fourth number: (text box)
- IBM service telephone number by voice communication (optional): 1-800-426-7378 (text box)
- Buttons at the bottom: <<Previous, Next>>, and Help.



On the **DCAF Customization** screen:

- ___ 18. Verify the information recorded and make the necessary changes.
Then, click on **Next>>** button.

DCAF Customization

Attached Consoles

	LU name	Destination address (hexadecimal)	RSAP (hex [04-9C])
<input checked="" type="checkbox"/> SNA	DCAFSNA	400000502080	04
<input checked="" type="checkbox"/> APPN	DCAFAPPN	400000502080	08
<input checked="" type="checkbox"/> LAN	DCAFLAN		

SDLC Attached Console

☒ SDLC DCAFSDLC

Accept any incoming calls on SP? ☒ Yes ☐ No

Local phone number: 0492116106

<<Previous Next>> Help

On **SP Customization Message** screen:

- ___ 19. Click on **Yes** button, to validate your customization, or

Click on **Cancel** button, to return to **Service Processor (SP) Customization** screen (Page 11)).

SP Customization Message

? You have terminated your SP customization.
Click on:
- Yes to validate your customization,
- or No to exit without saving,
- or Cancel to return to SP customization.

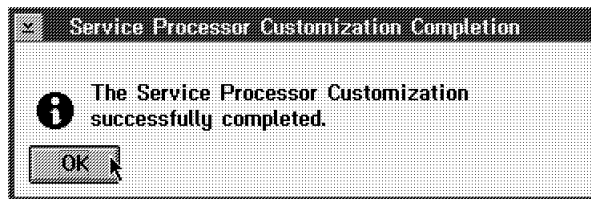
Yes No Cancel Help

- ___ 20. The Service Processor customization start, follow the progress on the following screen. wait until completion.

Service Processor Customization - Progress

Service Processor customization in progress.
It may take a few minutes to complete.
Please wait ..

- ___ 21. Wait until completion. Then, click on **OK** button.



- ___ 22. If necessary, the Service Processor will reboot automatically.

Note: If an error occurs, note the displayed message and press **Enter**. Keep the diskette available for investigation (log files: EULHIERR.LOG, OUT_BAK.1 and OUT_BAK.2), stored on diskette and hard disk for PE.

Do you have any NNP attached to the Service Processor?

- If **No**, go to 10.2.2, "Applying the Latest MCFs Received." on page 22
- If **Yes**, continue with next step.

10.1.8 Upgrading the NNP(s) on 3746-9x0.

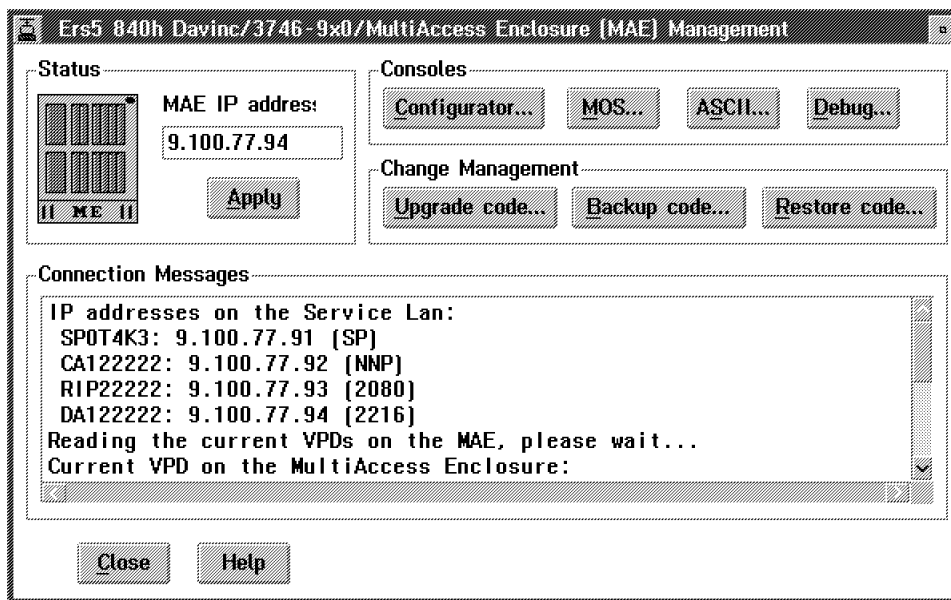
- ___ 1. On the **MOSS-E View** screen, double click on the **3746-9x0** icon.
- ___ 2. On the **3746-9x0 Menu** screen, click on **Network Node Processor (NNP) Management**.
- ___ 3. Double click on **Install/Remove/Change/Restore LIC/NNP**.
- ___ 4. Click on **NNP-A**, then click on **Restore LIC on NNP**.
- ___ 5. When requested, insert the **Network Node Processor installation diskette (PN 02L3537)** and follow the prompts until **Operation successfully completed** (Up to 45')
- ___ 6. Click on **Close**.
- ___ 7. If installed, repeat on the above procedure on **NNP-B**; then, continue with next step.

Do you have any MAE attached to the Service Processor?

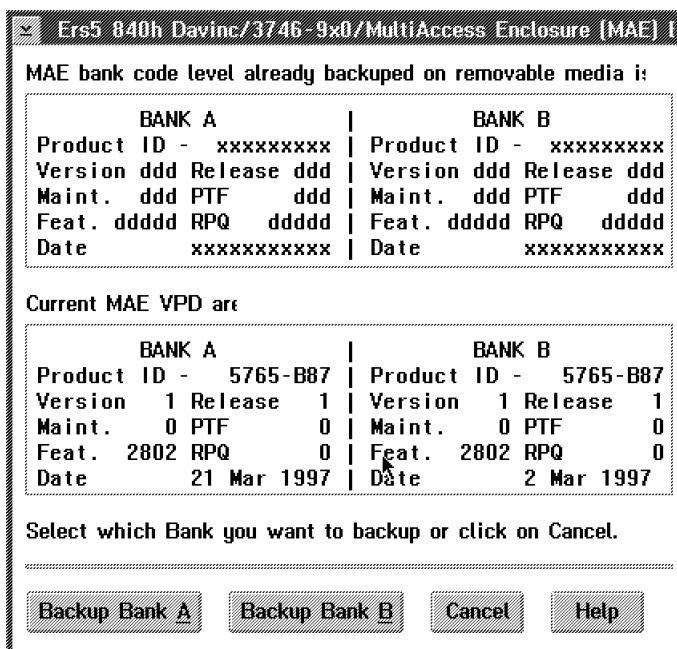
- If **No**, go to 10.2.2, "Applying the Latest MCFs Received." on page 22
- If **Yes**, continue with next step.

10.1.9 Saving the Image Code of the MAE Hard Disk on the SP Hard Disk

- ___ 1. Double click on the "3746-9x0 object icon"
- ___ 2. Click on "Multiaccess Enclosure Management", double click on "Manage Multiaccess Enclosure".
- ___ 3. Click on "Backup code...",



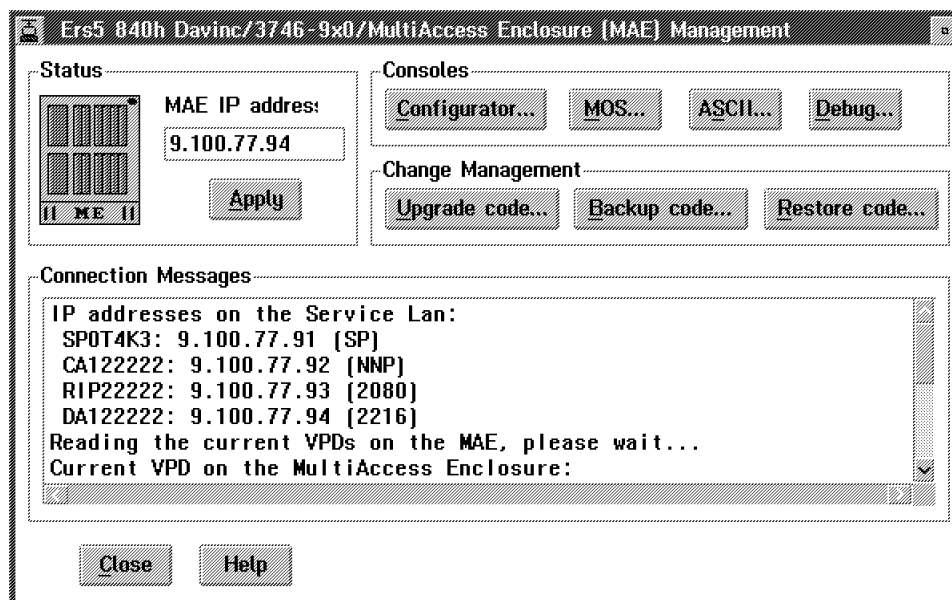
- ___ 4. Click on **Backup Bank A**, when completed, click on **Backup Bank B**.



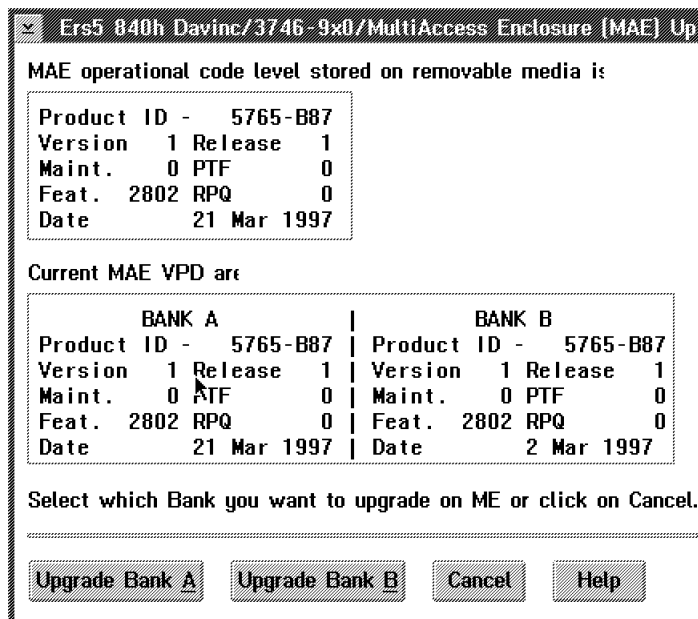


10.1.10 Installing the MAE Code.

- ___ 1. Insert the Licensed Internal Code CD ROM (PN 02L2730) in the disk drive.
- ___ 2. On the "Multiaccess Enclosure Management" screen, click on "Upgrade code..." button.

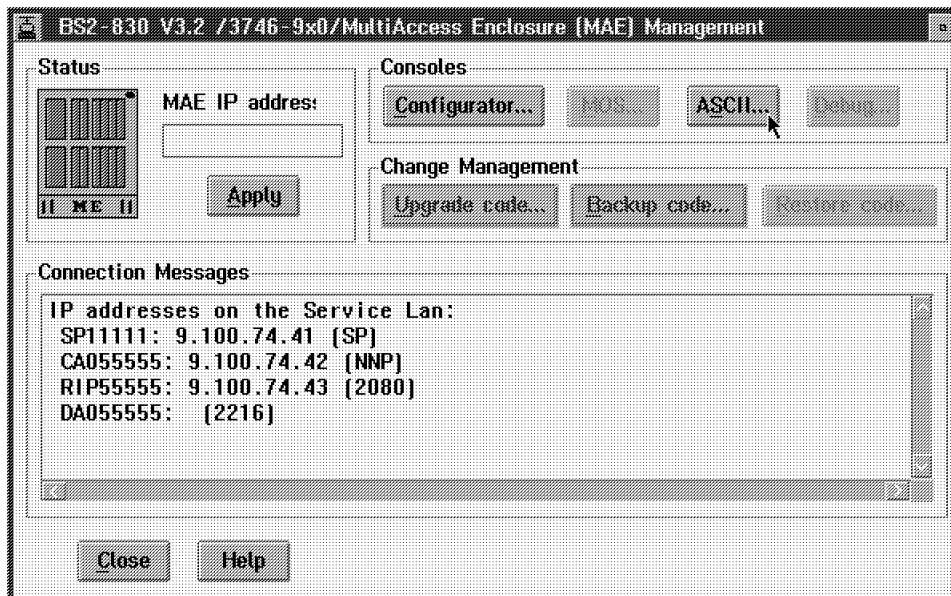


- ___ 3. Click on **Upgrade Bank A**, when completed, click on **Upgrade Bank B**.

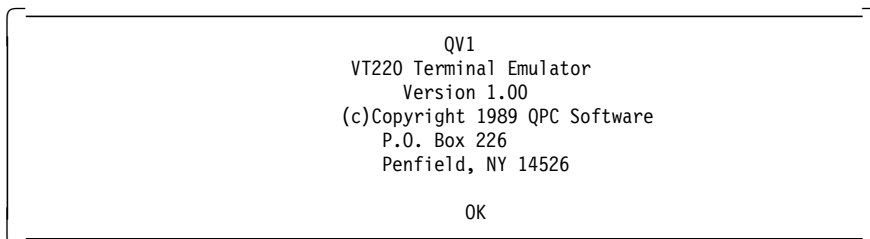


10.2 Installing the firmware

1. On the "Multiaccess Enclosure Management screen, click on **ASCII...**".



2. When the following screen is displayed, click on **OK**.



3. Several window are displayed during tests. Wait until the **Boot Information** window is displayed.
4. Press **F1** when required (to prematurely terminate boot).
5. Enter the Multiaccess Enclosure supervisory password when required: 2216.



- ___ 6. On the **System Management Services** window, select **option 4 - Utilities**

```
Nways System Firmware
Version 1.0
(C) Copyright IBM Corporation, 1996 All Rights Reserved.
                        System Management Services

Select one:
1. Manage Configuration
2. Boot Sequence Selection
3. Select Device to Test
4. Utilities

Enter      -   Esc=Quit      -   F1=Help      -   F3=Reboot      -   F9=Start OS -
-----
```

- ___ 7. On the **System Management Utilitie** window, select **option 7 - Update System Firmware**

```
Nways System Firmware
Version 1.0
(C) Copyright IBM Corporation, 1996 All Rights Reserved.
                        System Management Utilities

Select one:
1. Set Power-On Password
2. Set Supervisory Password
3. Enable Unattended Start Mode
4. Disable Unattended Start Mode
5. Remove Power-On Password
6. Remove Supervisory Password
7. Update System Firmware
8. Display Error Log
9. View or Set Vital Product Data
10. Manipulate Dead Man Timer
11. Remote Initial Program Load Setup
12. Change Management
13. Prepare Hard Disk
Enter      -   Esc=Quit      -   F1=Help      -
-----
```

- ___ 8. If not already done, insert the Licensed Internal Code CD ROM (PN 02L2730) in the Service Processor disk drive.



- ___ 9. From F/W Update options, select **option 2 - XMODEM a Remote Image File**.

```
Nways System Firmware
Version 1.0
(C) Copyright IBM Corporation, 1996 All Rights Reserved.
                        System Management Utilities

Select one:
  1. Set Power-On Password
  2. Set Supervisory Password
  3. Enable Unattended Start Mode
  4. Disable Unattended Start Mode
  5. Remove Power-On+-----F/W Update Options-----+
  6. Remove Supervi|
  7. Update System | 1. TFTP a Remote Image File
  8. Display Error  | 2. XMODEM a Remote Image File
  9. View or Set Vi | 3. Use a Local Image File
 10. Manipulate Dea|
 11. Remote Initial| Enter - Esc=Quit - F-1=Help
 12. Change Managem| -----
 13. Prepare Hard D+-----+

Enter - Esc=Quit - F1=Help -
-----
```

- ___ 10. Type **d:LDMfirm.Id** and press **Enter**.
- ___ 11. A message states to start the Xmodem transfer when the window is closed.

The transfer process is time-sensitive and may time out before the process starts. Restart from the F/W Update Options menu if necessary.

- If characters like '\$' appear by the message box, it means that the connection is not established.
- If 10-12 appears, Xmodem will likely time out and need to be restarted.

- ___ 12. After Xmodem completes, a message similar to the following is displayed:

This selection will update your
system firmware. Do you want to
continue?

- ___ 13. Type **NO**



- ___ 14. From F/W Update options, select **option 2 - Local Image File**.

```
Nways System Firmware
Version 1.0
(C) Copyright IBM Corporation, 1996 All Rights Reserved.
                        System Management Utilities

Select one:
  1. Set Power-On Password
  2. Set Supervisory Password
  3. Enable Unattended Start Mode
  4. Disable Unattended Start Mode
  5. Remove Power-On+-----F/W Update Options-----+
  6. Remove Supervi
  7. Update System   1. TFTP a Remote Image File
  8. Display Error   2. XMODEM a Remote Image File
  9. View or Set Vi  3. Use a Local Image File
10. Manipulate Dea
11. Remote Initial
12. Change Managem
13. Prepare Hard D+-----+

Enter - Esc=Quit - F-1=Help -
-----
```

- ___ 15. Type **c:firm.ld** and press **Enter**.
When firmware updated is complited, the Multiaccess Enclosure reboots.

10.2.1 Installing a New Version of the MAE Configurator.

- ___ 1. If not already done, insert the Licensed Internal Code CD ROM (PN 02L2730) in the Service Processor disk drive.
- ___ 2. On the "**Multiaccess Enclosure Management**" screen. click on "**Configurator...**" button.
- ___ 3. Click on "**OK**" button, the new configurator is being copied from the compact disk to the SP hard drive.
- ___ 4. Click on "**Close**" button.

10.2.2 Applying the Latest MCFs Received.

Very Important

Did you received from your Support Center any MCFs to be installed on the new LIC?

No Go to "Phase 2:" on page 6

YES Apply the MCFs received according to procedure '**Handling the Micro-code Fixes on the Licenced Internal Code**' listed in the *Service Processor Installation and Maintenance (Based on 7585, 3172, and 9585)*, SY33-2120

End of Procedure 1, Go to "Phase 2:" on page 6 .

10.3 Procedure 2 - 3746-9x0 Code Level Upgrade.

- ___ 1. Ask the Customer for a maintenance window on the 3746-9x0 with traffic deactivated.
- ___ 2. Perform a general IML on the 3746-9x0

10.3.1 3746-9x0 EEPROM Upgrade.

- ___ 1. Click on **3746-9x0 Menu**.
- ___ 2. Click on **Change Management**.
- ___ 3. Double click on **Upgrade/Downgrade EEPROM**.
- ___ 4. The **Upgrade Status** area will show the processors to be changed in reverse video.
- ___ 5. Click on **OK** to start the upgrade function.
Wait (up to 10 minutes) until the Upgrade Status is completed for each processor.
- ___ 6. Click on **Cancel** to leave the function.

10.3.2 Saving Configuration Parameters

- ___ 1. Double click on the **Service Processor** icon.
- ___ 2. Click on **Operation Management**.
- ___ 3. Double click on **Manage Disks and Databases**.
- ___ 4. Use the radio button to select **Save databases on diskette** to save the configuration parameters. When prompted, insert **Configuration Parameters diskette** (PN 02L3427) on the diskette drive.
- ___ 5. Click on **OK** and wait for completion. If error, note message and contact support.
- ___ 6. Click on **Cancel** to exit from the function.

10.3.3 Updating Installation Parameters Diskettes

Once you have upgraded the hardware of the machine, you have to regenerate the format on the Installation Parameters Diskettes using the following procedure: (Duration approximately 13 minutes)

- ___ 1. On the **Service Processor** menu, click on **Configuration Management**, click on **Manage 3745/3746 Installation/Removal**.
- ___ 2. On the **Controller Installation** menu, Click on the **3746-9x0** installed, then Click on **SAVE**.

Following pop up window confirming **Saving Active CDF-E as Reference**:

- ___ 3. Insert the **3746-900 installation parameters diskette (PN 17G5878)** of the 3746-9x0, then click on **OK**.
- ___ 4. On the third pop up screen confirming CDF-E saved to diskette, remove diskette as instructed, click on **OK**.



- ___ 5. Perform the above saving procedure for the backup diskettes, then click on **Cancel**.

End of Procedure 2..

Is another 3746-9x0 attached to the Service Processor? _____

- **Yes**, Go to "Phase 3:" on page 6.
- **No**, Go to 10.4, "Returning the Machine to Customer."

10.4 Returning the Machine to Customer

Do you have any NNP attached to the Service Processor? _____

- **YES**, Ask the customer if he wants to load the adapter code (APPN or IP) per processor type? Customer Answer:
 - **YES**, go to 10.4.1, "Adapter Code Loading per Processor Type." on page 25
 - **NO**, go to 10.4.2, "Logging OFF from Service Processor." on page 26
- **NO**, go to 10.4.2, "Logging OFF from Service Processor." on page 26



10.4.1 Adapter Code Loading per Processor Type.

Note

This procedure can be applied to each 3746-9x0 with a Network Node Processor.

1. On the **Service Processor** menu, click on **Configuration Management**, then click on **Manage 3745/3746 Installation/Removal**
2. On the **Controller Installation** menu, select the 3746-9x0 by clicking on the **<3746-9x0>** line, then click on "Select Feature".

Controller	Type	Model	S/N	Last changes saved
BS8-810L	<3745 not installed> 3746	950 (APPN)	12-34567	<Not saved>
BS FVT	3745 3746	900	BS-24681	<Not saved> <Not saved>
<New>	<3745 not installed> <3746 not installed>			
<New>	<3745 not installed> <3746 not installed>			
<New>	<3745 not installed> <3746 not installed>			

Buttons: Add..., Save..., Remove..., Clean..., Change..., Repair..., Select Feature, Cancel, Help

Status: 3746 M.E.S. 900 -> 950

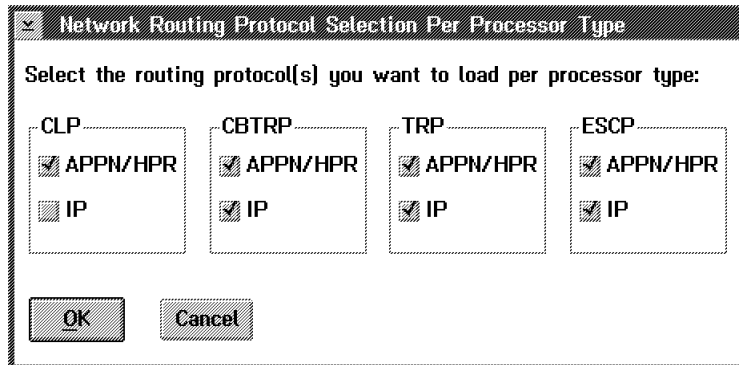
3. On the **Feature Selection** menu, click on **OK**.

Features	Password	Extended Functions	Password
<input type="checkbox"/> APPN/HPR	no password	<input type="checkbox"/> 3746 [FC.5800]	
<input type="checkbox"/> IP		<input type="checkbox"/> MAE [FC.5804/FC.5805]	
<input type="checkbox"/> X.25		<input type="checkbox"/> TN3270E Server [FC.5806]	
<input type="checkbox"/> ISDN	no password		

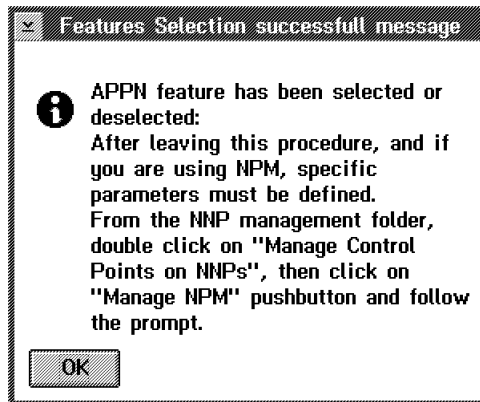
Buttons: OK, Cancel, Help



- ___ 4. According to the customer's requirement, On the **Network Routing Protocol Selection Per Processor Type** menu, disable or enable the protocol loaded per processor type, then click on **OK** button.



- ___ 5. Read the information message, then click on "OK" button.



- ___ 6. When completed, click on "OK" and perform a general IML to activate the feature installed.
- ___ 7. Repeat this procedure to the next 3746-9x0 with NNP, then go to 10.4.2, "Logging OFF from Service Processor."

10.4.2 Logging OFF from Service Processor.

- ___ 1. On **MOSS-E View** window, click on **Program**.
- ___ 2. Click on **LOG OFF MOSS-E**.

11.0 Test Procedures

Not applicable.



12.0 Field Updating

None.

After Installation (13-15)

13.0 Publications Update

None.

14.0 Parts Disposition

You MUST RETURN the removed Optical Disk Drive following the instructions given on the Returned Material Equipment Report (RMER) provided with this FFBM.

Return Container To :- Ship To Code 788 6XA

IBM NEDERLAND N. V.
C.O. NEDLOYD DISTRIBUTION CENTER
WESTPOORT B.V.
SCHARENBURG 1, 1046 BA AMSTERDAM
NEDERLAND.

The LIC (Optical Disk) is declared as Sensitive parts. Keeping the Master and Back-up Disks, RETURN all extra Optical disk to your local Branch office, to be returned to plant of Manufacturing HAVANT.

15.0 Machine Records

- Install updated machine history provided.
- Report the installation (As MES activity) and quality according to the existing procedure.

3745 FFBM	PN 02L1257 27 of 30	EC F12391 05 DEC 97	EC F12391A 28 JAN 98			
--------------	------------------------	------------------------	-------------------------	--	--	--



16.0 Appendix A. ESCON Configuration.

Very Important

Since EC D22560, the functions used to define the ESCON resources have changed:

- Up to now, you could use:
 - Either the EGA tool (level 3.6, stand-alone tool). or
 - the "Manage ESCON Processors" (function accessible from the 3746-9x0 menu).
- Now, to configure your ESCON processors, a new function has been developed and added on the service processor:
 - "Configure ESCON Processors".Invoking this function, you will use EGA (local, level 3.8).

A new version of the EGA tool (level 3.8, stand-alone tool) is also available. With this version you can export/import a configuration to/from a diskette.

Note: The "Manage ESCON Processors" function is now ONLY used to:

1. Display the lines status.
2. Display the stations status.
3. Manage the ESCON couplers status.

To be able to modify the ESCON configuration, save or re-enter your ESCON parameters as follows:

1. How did you define the ESCON resources?

If you have defined your ESCON resources using:

- The EGA tool (3.6), go to 5.
- "Manage ESCON processors" function, go to 2.

2. Record Your ESCON Configuration Parameters:

On your service processor:

- a. From the 3746-9x0 menu, click on **Configuration Management**.
- b. Double click on **Manage ESCON processors** and use this function to display and record your configuration parameters on a paper sheet, then go to 3.

3. Install the EGA Tool (3.8):

Obtain EGA 3.8 from your SE, then install on a PS/2 (or equivalent and running OS/2). Follow the installation instructions given in the READ EGA file (accessible from MKTTOOLS).

4. Re-enter your ESCON Resources Definition: Using the EGA tool, re-enter you ESCON resources according to the parameters recorded in 2, then go to 6 on page 29.

5. Install the New Version of EGA (3.8):



Note: To be able to recover the configuration data, install this new version on the same PS/2 where the old version was installed. Make sure that the configuration in EGA matches your current configuration. Obtain from your SE and replace your EGA with the new version (3.8) of the EGA tool. Follow the instructions given in the READ EGA file.

___ 6. Export your ESCON Configuration using EGA:

Using EGA, export your configuration on a diskette:

- ___ a. On the EGA primary screen, click on **Subset**.
- ___ b. Click on **Export** and insert a diskette to record the configuration, then
- ___ c. Go to 7 and ask your CE to upgrade the LIC to EC 840.

___ 7. Install Driver EC 840:

Use the Installation instructions PN DVR841, go to "Installation (Steps 9-12)" on page 6.

Note: When migrating from driver EC D22510"K" to EC 840, the current ESCON configuration is saved. When the installation is completed, using the 'Manage ESCON Processors' function you can display this configuration by selecting the option 'Display old configuration'. This can help you to check what you recorded manually in 2.

___ 8. Import your Configuration:

From the 3746-9x0 menu:

- ___ a. Click on **Configuration Management**.
- ___ b. Double click on **Configure ESCON Processor**.
- ___ c. Click on **OK**.
- ___ d. Click on **Subset**.
- ___ e. Click on **Import** and insert the diskette which contains the configuration file saved in 6.

___ 9. Activate your Configuration:

- ___ a. Open the imported configuration, and save it.
- ___ b. Answer 'YES' to the message asking you to transmit the configuration to the ESCP.
- ___ c. Click on **OK** on the message explaining that a re-iml of the machine is required.
- ___ d. Then, Re-IML your 3746-9x0

End of instructions.

--	--	--	--



PN 02L1257 30 of 30	EC F12391 05 DEC 97	EC F12391A 28 JAN 98			
------------------------	------------------------	-------------------------	--	--	--